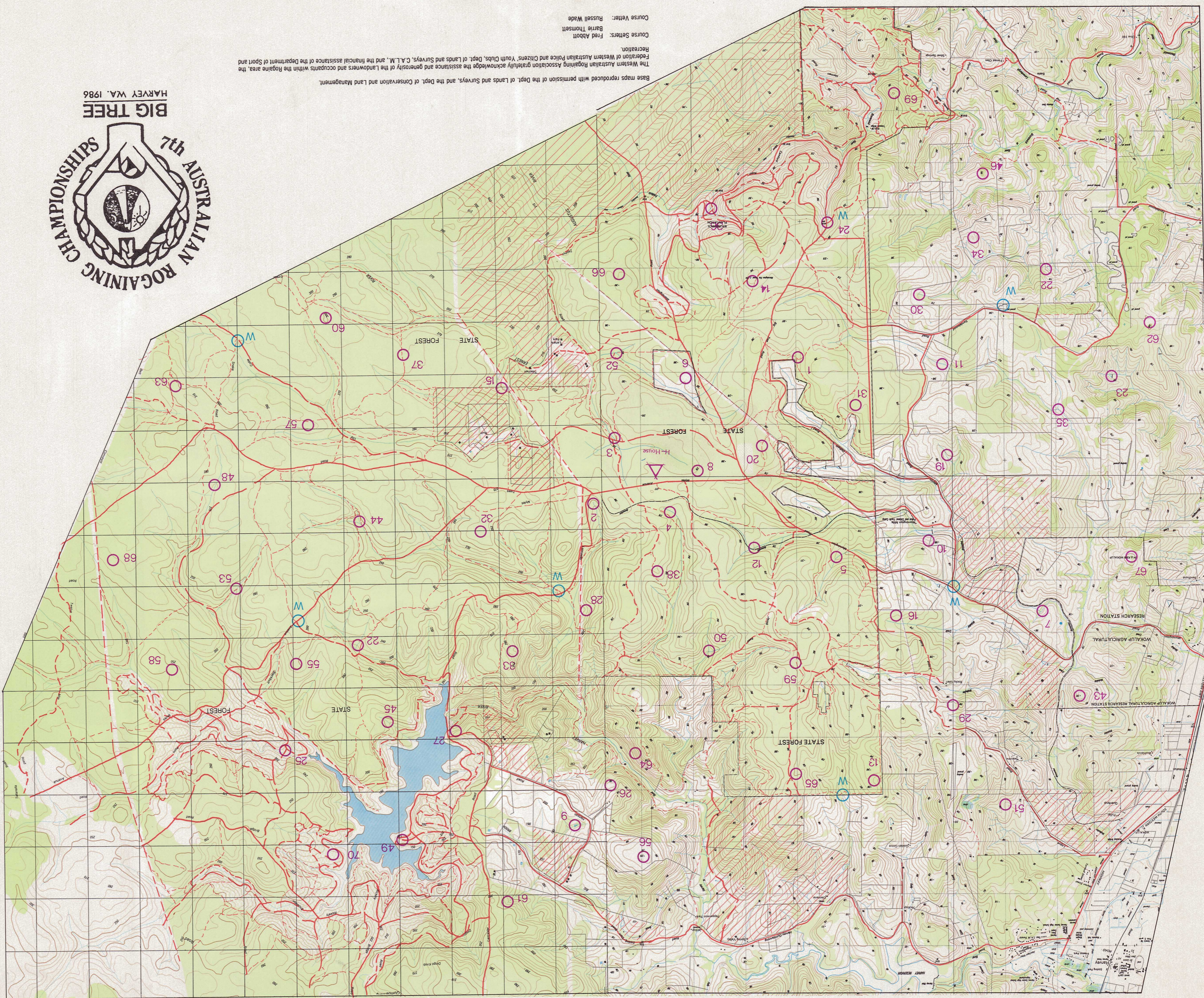


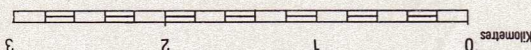
7th AUSTRALIAN ROGAINING CHAMPIONSHIPS



Base maps reproduced with permission of the Dept. of Lands and Surveys, and the Dept. of Conservation and Land Management.
 The Western Australian Rogaining Association gratefully acknowledge the assistance and generosity of the Landowners and occupants within the Rogaine area, the Federation of Western Australian Police and Citizens Youth Clubs, Dept. of Lands and Surveys, C.A.L.M., and the financial assistance of the Department of Sport and Recreation.
 Course Setters: Fred Abbott
 Course Vetter: Russell Wade

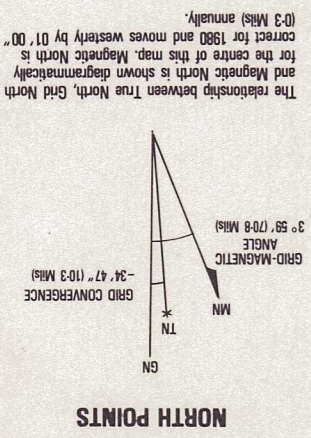


SCALE 1:50,000

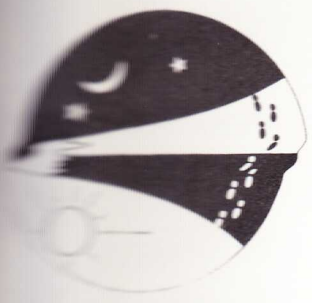


- LEGEND**
- CONTROL**
 - Water: W (blue circle), 99 (purple circle)
 - CULTURE**
 - Sealed / Unsealed road, two or more lanes: solid red line
 - Sealed / Unsealed road, one lane: dashed red line
 - Vehicle track: dotted red line
 - Fenced road, one lane: dashed red line with cross-ticks
 - Buildings**
 - Buildings: thin; Church: thin with cross; School: Police Station; Hospital: thin with cross; Post Office; Fire Station: thin with cross; Other Cultural Features: thin with cross
 - Landmark area: object; Yard: thin with cross
 - Drive-in cinema; Cemetery; Mine; Quarry: thin with cross
 - Telephone line; Power transmission line: thin with cross
 - HYDROGRAPHY**
 - General:
 - Perennial watercourse: lake: blue wavy line
 - Non-perennial watercourse: lake: blue wavy line
 - Channel: definite: blue wavy line
 - Channel: indefinite: blue wavy line
 - Dam wall / weir: blue wavy line
 - VEGETATION**
 - Vegetation dense: green hatched
 - Vegetation medium: green horizontal lines
 - Vegetation scattered: green vertical lines
 - Distinctive vegetation: green diagonal lines
 - Orchard or vineyard; Pine plantation: green diagonal lines
 - RELIEF**
 - Contour index: intermediate: dashed brown line
 - Contour supplementary: tertiary: dotted brown line
 - Contour supplementary: primary: solid brown line
 - Depression contour: dashed brown line
 - BOUNDARIES**
 - Administrative: dashed black line

GRID LINES: Are 1 000 metre intervals
 CONTOUR INTERVAL: 10metres with selected supplementary contours.



The relationship between True North, Grid North and Magnetic North is shown diagrammatically and Magnetic North is shown diagrammatically for the centre of this map. Magnetic North is correct for 1980 and moves westerly by 01' 00'' @ 3 Metres annually.



CONTROL	DESCRIPTION	VALUE
1	THE TRACK JUNCTION	20
2	THE WATER COURSE AT THE HEAD	20
3	THE CREEK / THE TRACK, JUNCTION 22 METRES, 11 DEGREES	20
4	THE WATER COURSE	20
5	A TERMITE MOUND	20
6	A THICKET	20

7	THE CREEK BEND	30
8	A SHALLOW GULLY ON A FALLEN TREE	30
9	THE DAM 30 METRES, 80 DEGREES	30
10	THE GULLY SOUTH BANK	30
11	THE CREEK	30
12	THE RAIL FORM / THE CREEK, JUNCTION	30
13	THE GULLY	30
14	NORTH WEST FENCE CORNER 50 METRES, 359 DEGREES	30
15	THE CREEK / THE TRACK, JUNCTION	30
16	THE GULLY AT THE HEAD	30

19	THE CREEK	40
20	ROCKY GROUND WEST BANK	40
21	THE WATER COURSE (see map corrections)	40
22	THE WATER COURSE ON A ROOT MOUND	40
23	THE DAM 75 METRES, 110 DEGREES	40
24	A BIG TREE 40 METRES, 140 DEGREES	40
25	THE ROAD / THE CREEK, JUNCTION 20 METRES, 350 DEGREES	40
26	A WIND MILL	40
27	A RUIN	40
28	A BOULDER CLUSTER	40
29	THE SADDLE	40
30	A MARSH SOUTH SIDE	40

31	THE BROAD SPUR	50
32	A KNOLL	50
33	THE GULLY	50
34	THE KNOLL	50
35	THE CREEK JUNCTION	50
36	THE CREEK JUNCTION (see map corrections)	50
37	A TRACK JUNCTION 50 METRES, 61 DEGREES, INSIDE THE BLACK STUMP	50

38	THE SPUR	50

CONTROL	DESCRIPTION	VALUE
43	THE SUMMIT 170 METRES, 180 DEGREES, AT THE CLIFF FOOT	60
44	THE EASTERN WATER COURSE	60
45	THE WATER COURSE	60
46	THE KNOLL	60
48	THE CREEK	60
49	THE KNOLL WESTERN EDGE OF REEDS	60
50	THE CREEK JUNCTION	60
51	A CREEK / A FENCE, JUNCTION SOUTHWEST BANK	60
52	THE CREEK / THE WATER COURSE, JUNCTION	60
53	THE CREEK / THE TRACK, JUNCTION	60

55	A KNOLL	70
56	THE SUMMIT	70
57	THE SPUR ON A ROOT MOUND	70
58	A SADDLE SOUTHERN EDGE OF THICKET	70
59	THE SADDLE	70
60	THE KNOLL	70

61	THE WATER COURSE	80
62	THE SADDLE	80
63	A SADDLE 135 METRES, 230 DEGREES	80
64	A CLIFF ON A FALLEN BRANCH	80
65	THE GULLY AT THE FOOT	80
66	A TERMITE MOUND	80

67	THE SUMMIT	100
68	A SHALLOW GULLY	100
69	THE KNOLL	100
70	A KNOLL	100

Sun Set Saturday 20th Sept, 1811 Hrs.		50
Sun Rise Sunday 21st Sept, 0608 Hrs.		50
Moon Rise Saturday 20th Sept, 2017 Hrs.		50
Moon Set Sunday 21st Sept, 0739 Hrs.		50